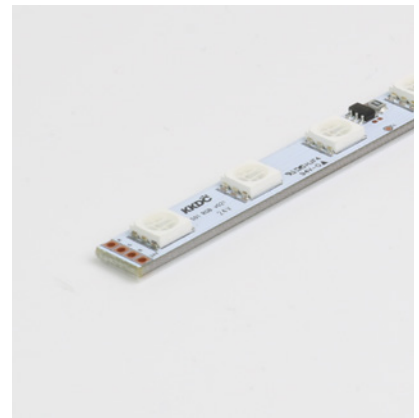


TIMI RGB Fixture Guide



Indoor | Surface | RGB Output

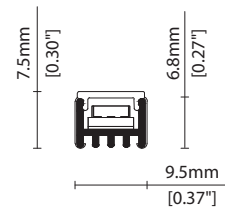


Key applications

- ✓ Architectural detail
- ✓ Backlighting & signage
- ✓ Cabinet & furniture
- ✓ Cove lighting
- ✓ Display case
- ✓ Indirect lighting
- ✓ Interior
- ✓ Mirror back lighting
- ✓ Retail display
- ✓ Shelving display
- ✓ Special effect

Key features

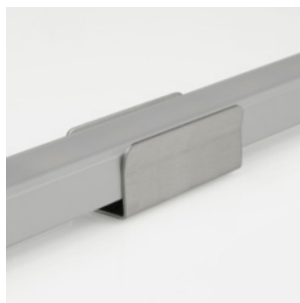
- ✓ Custom lengths
- ✓ Cutable (IP20)
- ✓ Constant Voltage (CV)
- ✓ Diffusion: spoting
- ✓ IP20 dry area
- ✓ Light on time (10 day delivery)
- ✓ Lens options
- ✓ RGB



MOUNTING METHODS



KKCP-13 Lock clip



KKCP-01 Standard clip



KKCP-05 Lens lock clip



Inside lens accessory

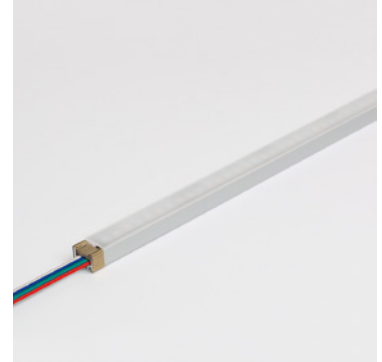
Linear

TIMI RGB

Specification sheet

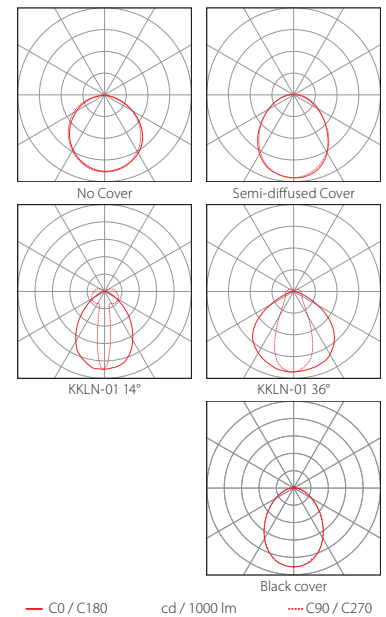
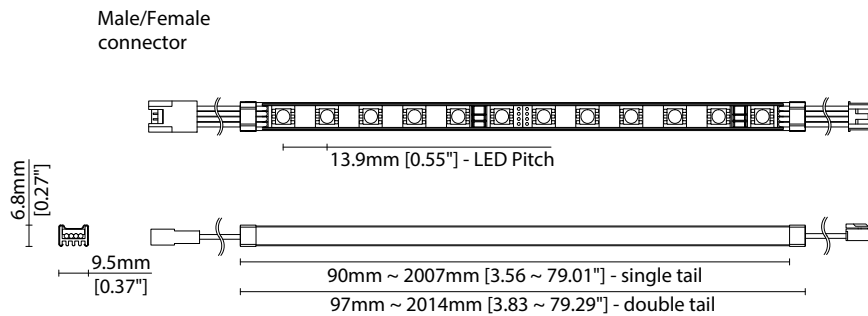


Dimensions	H6.8/W9.5/L97-2014mm (H0.27/W0.37/L3.81-79.29in) (Double tail) / H6.8/W9.5/L90-2007mm (H0.27/W0.37/L3.54-79.01in) (Single tail)
PCB Cut-point	83.3mm increment/2000mm max (3.28in increment/78.74in max)
LED Pitch	13.9mm-72LED/m (0.55in - 22LED/ft)
Chip	RGB
Cover/Optics	No cover (120°) / Semi-diffused (100°) / Black (90°) / KKLN-01 lens (14° or 36°)
CCT	Red 620-625nm/Blue 455-460nm/Green 520-525nm
LED binning	5nm tolerance
CRI	N/A
Lifetime	30,000 hours @ 25°C (30,000 hours @ 77°F)
Operating temp	T _a = -25 to 50°C (T _c max = 80°C) T _a = -13 to 122°F (T _c max = 176°F)
IP Rating	IP20
Finish	Silver anodised
Mounting	Surface mounting via clips
Power feed	Hardwire tails or male/female connectors
Control	DMX/DALI



Power consumption	Supply voltage	Supply current
15.6W/m (4.75W/ft)	24V DC	0.65A/m (0.20A/ft)

No Cover	Semi-diffused	14° (KKLN-01)	36° (KKLN-01)	Black cover
Red: 150lm/m (46lm/ft) Green: 320lm/m (98lm/ft) Blue: 50lm/m (15lm/ft) RGB: 460lm/m (140lm/ft)	Red: 120lm/m (37lm/ft) Green: 270lm/m (82lm/ft) Blue: 40lm/m (12lm/ft) RGB: 390lm/m (119lm/ft)	Red: 140lm/m (43lm/ft) Green: 300lm/m (91lm/ft) Blue: 50lm/m (15lm/ft) RGB: 440lm/m (140lm/ft)	Red: 140lm/m (43lm/ft) Green: 300lm/m (91lm/ft) Blue: 50lm/m (15lm/ft) RGB: 430lm/m (131lm/ft)	Red: 40lm/m (12lm/ft) Green: 85lm/m (26lm/ft) Blue: 13lm/m (4lm/ft) RGB: 125lm/m (38lm/ft)



Data derived from production samples tested to UKAS/IESNA LM-79-08 standards.

FIXTURE

Model	Finish	Cover/Lens ¹	Grade	LED	Colour (CCT)	Length Availability ²	IP	Cable Length	Power Feed ³	Input									
TIMI	TI	Silver Anodised	SA	No cover ⁴	X	m 97-2014mm ⁵ 90-2007mm ⁶ 83.3mm increments i 3.83-79.29in ⁵ 3.56-79.01in ⁶ 3.28in increments (Specify length code OR total run length)	501	RGB	RGB	m	97-2014mm ⁵ 90-2007mm ⁶ 83.3mm increments	IP20	20	50mm (1.97in)	0050	Single no sheath tail	S00X	DC 24V	g
				Semi-diffused ⁴	D							300mm (11.81in)	0300	Double no sheath tail	D00X				
				KKLN-01D (14°) ⁵	S									Single no sheath IP20 connector	S20X				
				KKLN-01U (36°) ⁵	R									Double no sheath IP20 connector	D20X				
				Black cover ⁵	Y														

¹ Refer to **Cover/Lens Options** on **Options** pages

² Refer to **Length Availability List** or enter total run length instead of length code

³ Refer to **Power Feed Options** on **Options** pages

⁴ Operating temperatures vary for TIMI with cover and TIMI without cover; please check with a KKDC engineer if operating temperature is limiting product application

⁵ Double clamp TIMI length

⁶ Single clamp TIMI length

Code Example:

TI	-	SA	-	D	-	s	-	501	-	RGB	-	m	514	-	20	-	0050	-	D20X	-	g
TIMI		Silver Anodised		Semi-diffused				501		RGB		m	514mm		IP20		50mm (1.97in)		Double no sheath IP20 connector		DC 24V

ACCESSORIES

Mounting Accessories

KKCP-01	Clip (1no.)
KKCP-51	Clip (500no.)
KKCP-13	Lock Clip
KKCP-05	Lens Lock Clip for KKLN-01 (1no.)
KKCP-55	Lens Lock Clip for KKLN-01 (500no.)

* Refer to **Mounting accessories** on **Accessories** pages

Connection Accessories

KKCN-07	4 PIN RGB male & female 50mm (1.97in) pair
KKCN-09	4 PIN RGB male & female 300mm (11.81in) pair
KKCN-11	4 PIN RGB 300mm (11.81in) extension lead

* Refer to **Power feed** on **Accessories** pages

PSU/Driver

DALI/DMX

* Refer to **Driver/PSU Options** page for details or provide requirement and KKDC to offer the suitable option

LED ENGINE VARIANTS (LED STRIP TYPE)

Colour	LED	Lumen/m	Lumen/ft	W/m	W/ft	Spec Doc	Length	Increment
Single CCT	R007	680	207	7	2.13	TIMI R007	97-2014mm (3.81-79.29in)	41.7mm (1.64in)
	R014	1380	421	14	4.27	TIMI R014	97-2014mm (3.81-79.29in)	41.7mm (1.64in)
	A010	1400	426	10	3.05	TIMI A010	91-2014mm (3.58-79.29in)	38.46mm (1.51in)
	A020	2800	853	20	6.10	TIMI A020	91-2014mm (3.58-79.29in)	38.46mm (1.51in)
Warm Dim/Dynamic White	R207	1476	450	16	4.88	TIMI R207	97-2014mm (3.81-79.29in)	83.3mm (3.28in)
RGB	501	Red 150 Green 320 Blue 50 RGB 460	Red 46 Green 98 Blue 15 RGB 140	16	4.88	TIMI RGB	97-2014mm (3.81-79.29in)	83.3mm (3.28in)

* Performance data: no cover, RGB

TIMI RGB

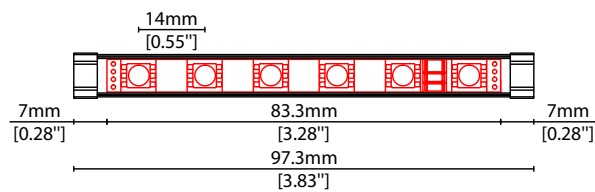
Length Availability List



Length Code		Fixture Length ¹		LED Strip ²		End Cap Dimension		Wattage (W)	Output (lm)			
Metric	Imperial(US)	Metric	Imperial(US)	Metric	Imperial(US)	Metric	Imperial(US)		R	G	B	W
m0097	i0004	97mm	3.83in	83mm	3.28in	N/A	N/A	1.30	13	27	4	38
m0181	i0007	181mm	7.11in	167mm	6.56in	N/A	N/A	2.60	25	53	8	77
m0264	i0010	264mm	10.39in	250mm	9.84in	N/A	N/A	3.90	38	80	13	115
m0347	i0014	347mm	13.68in	333mm	13.12in	N/A	N/A	5.20	50	107	17	153
m0431	i0017	431mm	16.96in	417mm	16.41in	N/A	N/A	6.50	63	133	21	192
m0514	i0020	514mm	20.24in	500mm	19.69in	N/A	N/A	7.80	75	160	25	230
m0597	i0024	597mm	23.52in	583mm	22.97in	N/A	N/A	9.10	88	187	29	268
m0681	i0027	681mm	26.80in	667mm	26.25in	N/A	N/A	10.40	100	213	33	307
m0764	i0030	764mm	30.08in	750mm	29.53in	N/A	N/A	11.70	113	240	38	345
m0847	i0033	847mm	33.36in	833mm	32.81in	N/A	N/A	13.00	125	267	42	383
m0931	i0037	931mm	36.64in	917mm	36.09in	N/A	N/A	14.30	138	293	46	422
m1014	i0040	1014mm	39.92in	1000mm	39.37in	N/A	N/A	15.60	150	320	50	460
m1097	i0043	1097mm	43.21in	1083mm	42.65in	N/A	N/A	16.90	163	347	54	498
m1181	i0046	1181mm	46.49in	1167mm	45.94in	N/A	N/A	18.20	175	373	58	537
m1264	i0050	1264mm	49.77in	1250mm	49.22in	N/A	N/A	19.50	188	400	63	575
m1347	i0053	1347mm	53.05in	1333mm	52.50in	N/A	N/A	20.80	200	427	67	613
m1431	i0056	1431mm	56.33in	1417mm	55.78in	N/A	N/A	22.10	213	453	71	652
m1514	i0060	1514mm	59.61in	1500mm	59.06in	N/A	N/A	23.40	225	480	75	690
m1597	i0063	1597mm	62.89in	1583mm	62.34in	N/A	N/A	24.70	238	507	79	728
m1681	i0066	1681mm	66.17in	1667mm	65.62in	N/A	N/A	26.00	250	533	83	767
m1764	i0069	1764mm	69.45in	1750mm	68.90in	N/A	N/A	27.30	263	560	88	805
m1847	i0073	1847mm	72.74in	1833mm	72.18in	N/A	N/A	28.60	275	587	92	843
m1931	i0076	1931mm	76.02in	1917mm	75.47in	N/A	N/A	29.90	288	613	96	882
m2014	i0079	2014mm	79.30in	2000mm	78.75in	N/A	N/A	31.20	300	640	100	920

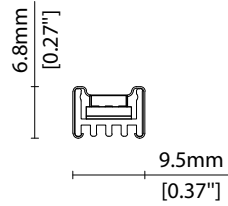
¹ Actual total overall length of light fixture (LED strip + end caps + void/wire hole)

² Actual length of PCB strip

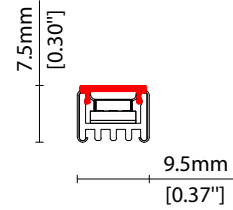


COVER/LENS OPTIONS

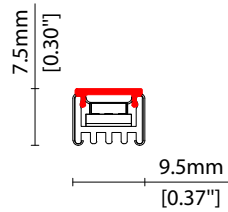
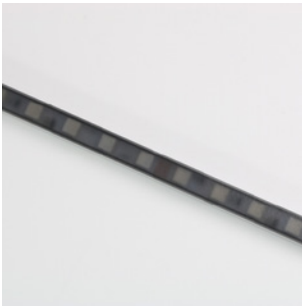
* Options are an integral part of the fixture ordering codes. Please refer to **Code Table** pages.



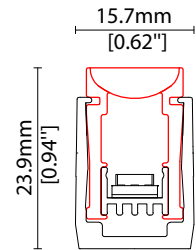
X No cover
W9.5/H6.8mm (W0.37/H0.27")



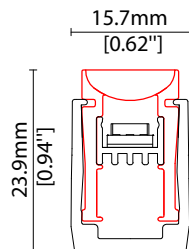
D Semi-diffused cover
Polycarbonate finish
W9.5/H7.5mm (W0.37/H0.30")



Y Black semi-diffused cover
Black translucent PMMA
25% light output
W9.5/H7.5mm (W0.37/H0.30")



S 14° lens (KKLN-01D)
14° beam linear lens,
co-extruded PMMA
W12.8/H20mm (W0.5/H0.79")

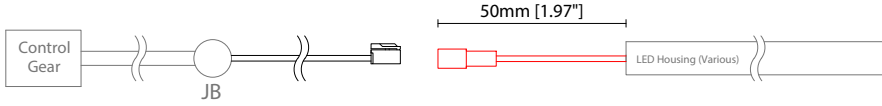


R 36° lens (KKLN-01U)
36° beam linear lens,
co-extruded PMMA
W12.8/H20.4mm (W0.5/H0.8")

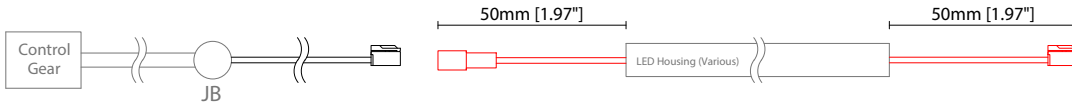
POWER FEED OPTIONS

* Options are an integral part of the fixture ordering codes. Please refer to **Code Table** pages.

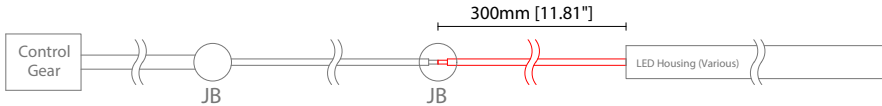
0050 S20X 50mm (1.97") Single no sheath IP20 connector



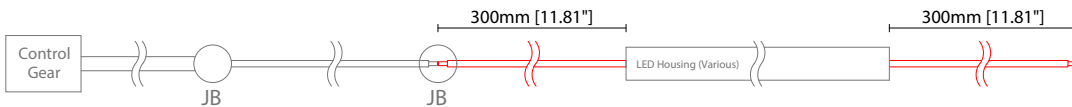
0050 D20X 50mm (1.97") Double no sheath IP20 connector



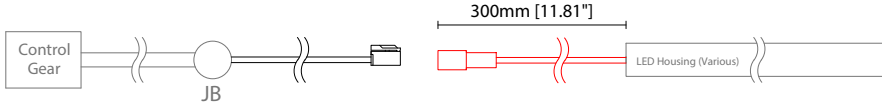
0300 S00X 300mm (11.81") Single no sheath tail



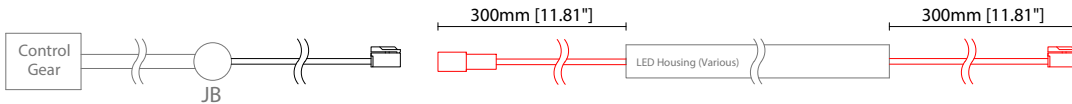
0300 D00X 300mm (11.81") Double no sheath tail



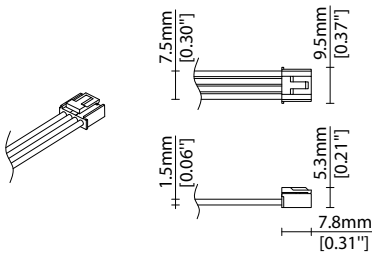
0300 S20X 300mm (11.81") Single no sheath IP20 connector



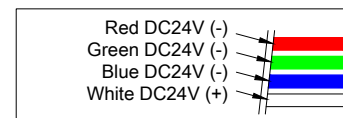
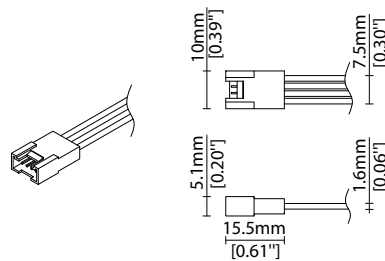
0300 D20X 300mm (11.81") Double no sheath IP20 connector



4 Pin RGB Female Connector



4 Pin RGB Male Connector



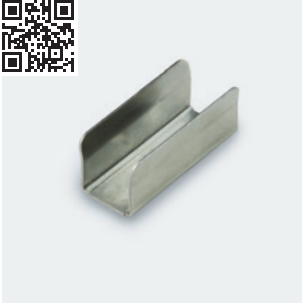
Key

Control Gear Power supply, sub-controllers & control systems

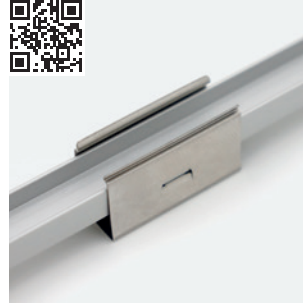
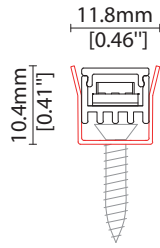
JB Junction box / cable connection

MOUNTING ACCESSORIES

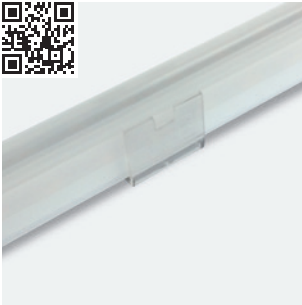
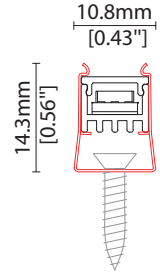
Note: Accessories are to be ordered separately with corresponding code shown below.



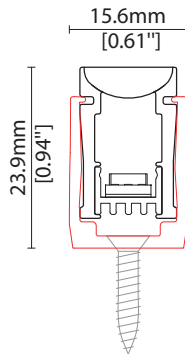
KKCP-01 (1no.)
 KKCP-51 (500no.)
 Clip (allow 3 per metre/40in)
 S/Steel finish
 L25/W11.8/H10.4mm
 (L0.98/W0.46/H0.41")



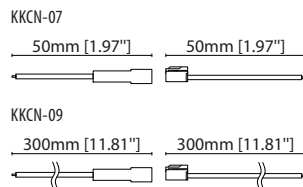
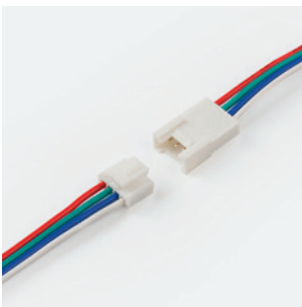
KKCP-13
 Lock clip (allow 2 per metre/40in)
 S/Steel finish
 L25/W10.8/H14.5mm
 (L0.98/W0.43/H0.57")



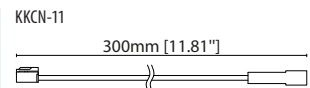
KKCP-05 (1no.)
 KKCP-55 (500no.)
For use with KKLN-01 lens only
 Lens lock clip (allow 3 per metre/40in)
 Clear polycarbonate finish
 L25/W15.6/H24mm
 (L0.98/W0.61/H0.94")



POWER FEED



KKCN-07 50mm (1.97in) pair
 KKCN-09 300mm (11.81in) pair
 4 PIN RGB male + female
 connector set



KKCN-11
 4 PIN RGB 300mm (11.81in)
 extension lead

KKDC CONTROL



IP20
Plastic housing
L170/W59/H29mm
(L6.69/W2.32/H1.14in)

KKDM-06 1-10V

visDIM dimmable sub-controller
(4 x 8A max @ 12-36V)



IP20
Plastic housing
L170/W53.4/H28mm
(L6.69/W2.10/H1.10in)

KKSC-05 DMX

visDIM dimmable sub-controller
(4 x 5A max @ 12-36V)



IP20
Plastic housing
L170/W59/H29mm
(L6.69/W2.32/H1.14in)

KKDL-02 DALI

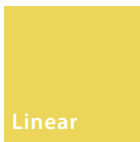
visDIM dimmable sub-controller
(4 x 8A max @ 12-36V)



IP20
Plastic housing
L166/W53.4/H23mm
(L6.54/W2.10/H0.91in)

KKDL-03 DALI

visDIM dimmable sub-controller
(4 x 5A max @ 12-36V)



TIMI

Driver/PSU Options



AVAILABLE PSU OPTIONS

Control Mode	PSU (Order Code)	Input Voltage AC	Output Voltage DC	Rated Output Current	Rated Power	Dim %	IP Rating
Switched	CEN-60-24	90-295V	24V	2.5A	60W	-	IP67
	HLG-60H-24	90-305V	24V	2.5A	60W	-	IP67
	HLG-100H-24	90-305V	24V	4.0A	100W	-	IP67
	HLG-150H-24	90-305V	24V	6.3A	150W	-	IP67
	HLG-240H-24	90-305V	24V	10A	240W	-	IP67
0-10V (1-10V)	PWM-40-24	90-305V	24V	1.67A	40W	100-0.15 (100-10)	IP67
	PWM-60-24	90-305V	24V	2.5A	60W	100-0.15 (100-10)	IP67
	PWM-90-24	90-305V	24V	3.67A	90W	100-0.15 (100-10)	IP67
	PWM-120-24	90-305V	24V	5.0A	120W	100-0.15 (100-10)	IP67
DALI	LIN100A1	120-277V	24V	1A per channel	100W	100-0.1	IP66/IP40
DMX RGB	LIN100A1	120-277V	24V	1.33A per channel	100W	100-0.1	IP66/IP40
DMX RGBW	LIN100A1	120-277A	24V	1A per channel	100W	100-0.1	IP66/IP40

Flicker Free Options - Combination of PSU+ sub-controller

Control Mode	PSU (Order Code)	Sub-controller (Order Code)	Input Voltage AC	Output Voltage DC	Rated Output Current	Rated Power	Dim %	IP Rating PSU/ Sub-controller
0-10V or 1-10V	CEN-60-24	KKDM-06	90-295V	24V	2.5A	60W	100-0.9	IP67/IP20
	HLG-60H-24	KKDM-06	90-295V	24V	2.5A	60W	100-0.9	IP67/IP20
	HLG-100H-24	KKDM-06	90-295V	24V	4.0A	100W	100-0.9	IP67/IP20
	HLG-150H-24	KKDM-06	90-295V	24V	6.3A	150W	100-0.9	IP67/IP20
	HLG-240H-24	KKDM-06	90-295V	24V	10.0A	240W	100-0.9	IP67/IP20
DALI	CEN-60-24	KKDL-02/03	90-295V	24V	2.5A	60W	100-0.1	IP67/IP20
	HLG-60H-24	KKDL-02/03	90-305V	24V	2.5A	60W	100-0.1	IP67/IP20
	HLG-100H-24	KKDL-02/03	90-305V	24V	4.0A	100W	100-0.1	IP67/IP20
	HLG-150H-24	KKDL-02/03	90-305V	24V	6.3A	150W	100-0.1	IP67/IP20
	HLG-240H-24	KKDL-02/03	90-305V	24V	10.0A	240W	100-0.1	IP67/IP20
DMX RGB	CEN-60-24	KKSC-05	90-295V	24V	2.5A	60W	100-0.9	IP67/IP20
	HLG-60H-24	KKSC-05	90-305V	24V	2.5A	60W	100-0.9	IP67/IP20
	HLG-100H-24	KKSC-05	90-305V	24V	4A	100W	100-0.9	IP67/IP20
	HLG-150H-24	KKSC-05	90-305V	24V	6.3A	150W	100-0.9	IP67/IP20
	HLG-240H-24	KKSC-05	90-305V	24V	10.0A	240W	100-0.9	IP67/IP20

¹ The items shown above cover the most frequently used specification but does not exhaust the possible options

² PSU and/or driver can be chosen from the table, or KKDC may recommend the best option upon receipt of the controls requirement and installation environment

³ Electrical shop drawing will include detailed information of PSU and relevant control drivers

⁴ Cut sheets are available on the controls section of www.kkdc.lighting or upon request